

# Apartments

LIVE REMARKABLY



MOUNTAIN OAK  
QUEENSTOWN APARTMENTS

[mountainoak.co.nz](http://mountainoak.co.nz)

DEVELOPED BY

**SG SAFARI GROUP**

| Unbeatable Views.

# One, Two & Three Bed Apartments

Step into unbeatable views.

Wake up to mountain views and settle in to smart, stylish living in Queenstown's premier master planned destination, Remarkables Park. Crafted for comfort and function, they're perfect for first-home buyers, downsizers, and those looking for a property investment in Queenstown.

QUEENSTOWN



APARTMENTS



APARTMENTS

From \$639,000



## Your Key to Queenstown Living.



- ✓ OIO exemption certificate (non-residents approved to purchase)
- ✓ 365-day visitor accommodation consent
- ✓ Residential or visitor accommodation investment options
- ✓ On-site residential and visitor accommodation manager services



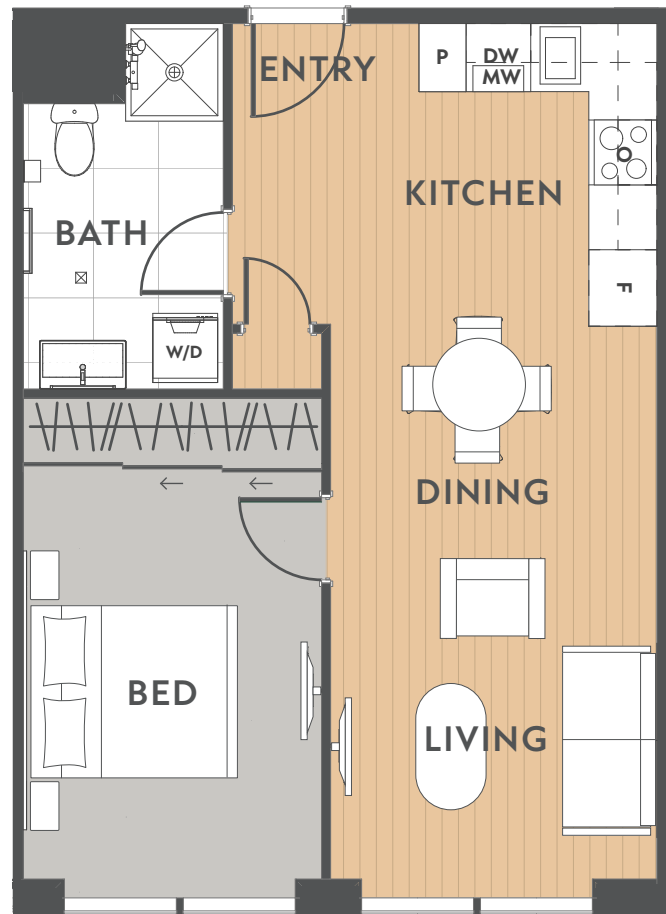
# One Bed Floor Plan 1 of 3

1 

1 

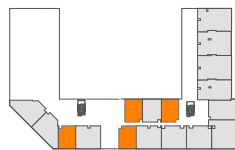
**\*49-52m<sup>2</sup>**

\*To confirm apartment location and sizing please refer to unit title plans with your sales consultant.



## Apartments

### GROUND



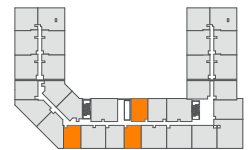
G01, G03, G09, G11

### LEVEL 1



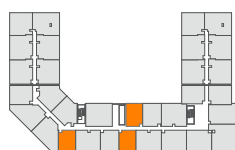
101, 117, 120

### LEVEL 2



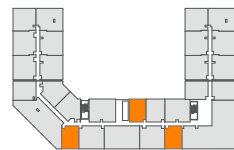
201, 217, 220

### LEVEL 3



301, 317, 320

### LEVEL 4



401, 413, 417



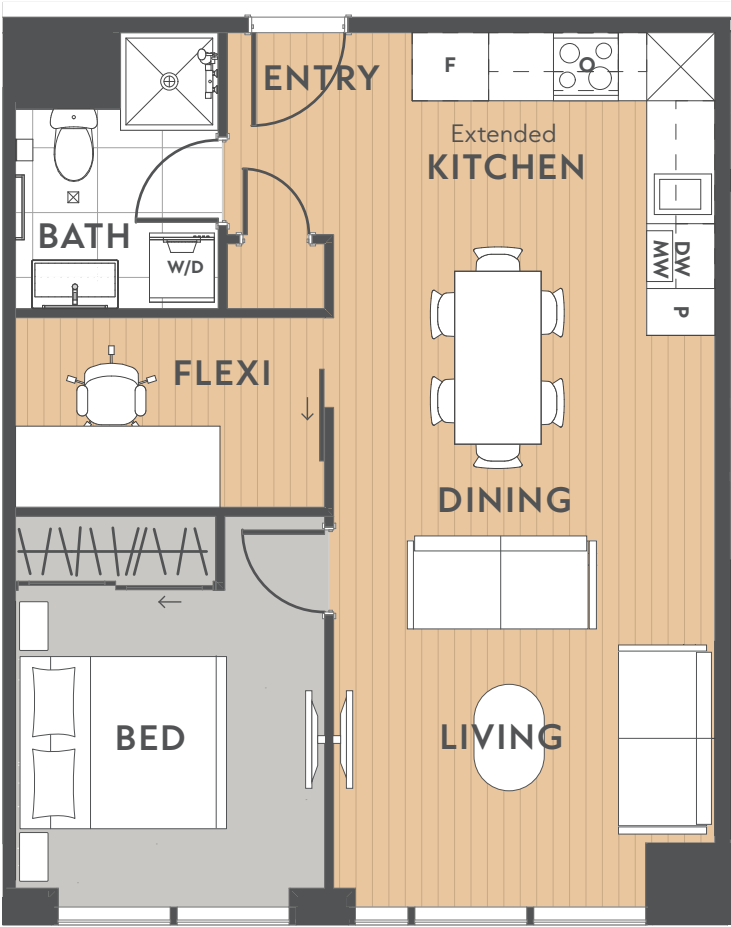
# One Bed Floor Plan 2 of 3

1  + FLEXI

1 

**\*55-56m<sup>2</sup>**

\*To confirm apartment location and sizing please refer to unit title plans with your sales consultant.



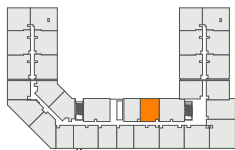
## Apartments

### GROUND



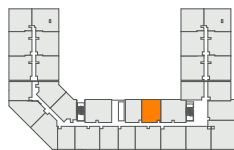
G02

### LEVEL 1



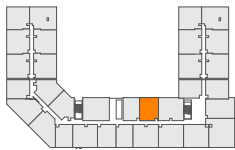
102

### LEVEL 2



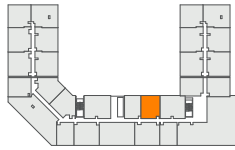
202

### LEVEL 3



302

### LEVEL 4



402



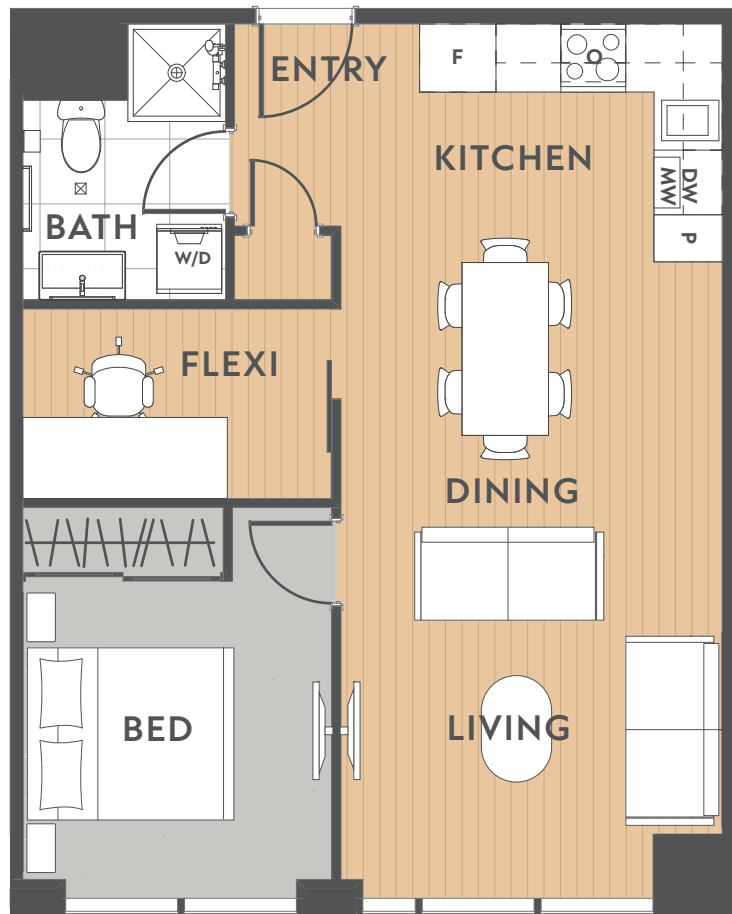
# One Bed Floor Plan 3 of 3

1  + FLEXI

1 

**\*54-57m<sup>2</sup>**

\*To confirm apartment location and sizing please refer to unit title plans with your sales consultant.



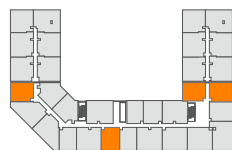
## Apartments

### LEVEL 1



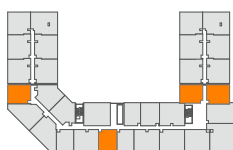
104, 111, 118, 123

### LEVEL 2



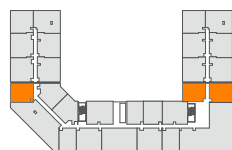
204, 211, 218, 223

### LEVEL 3



304, 311, 318, 323

### LEVEL 4



404, 411, 419



# Two Bed Floor Plan 1 of 9

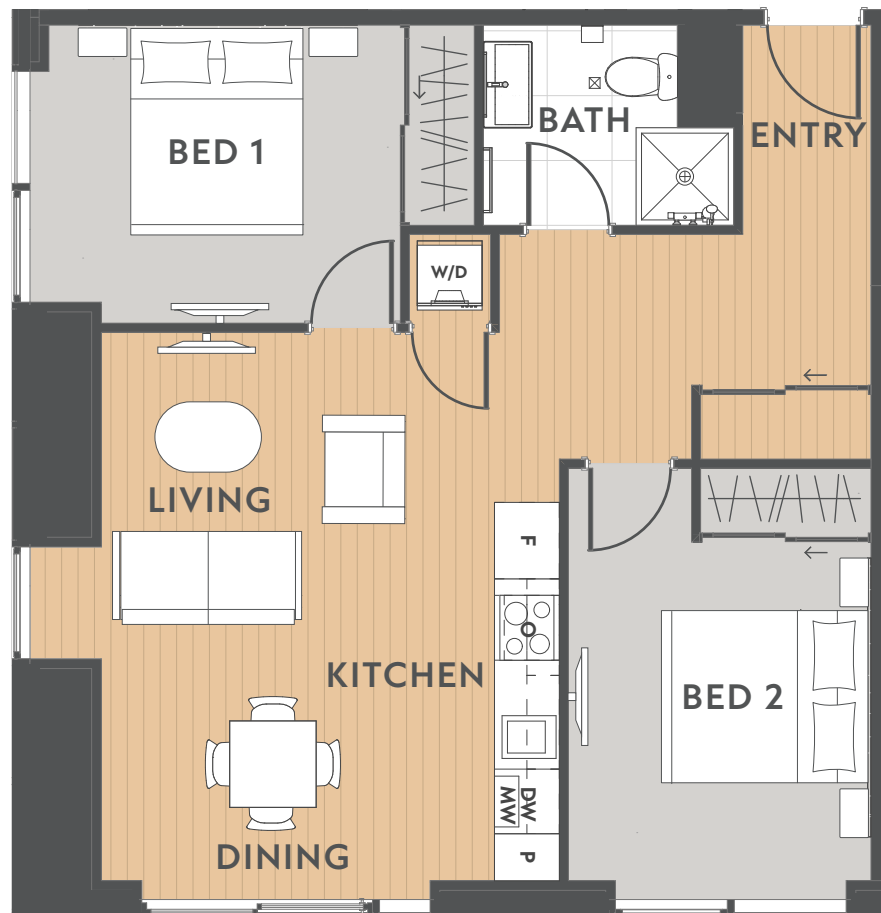
2 

1 

 YES

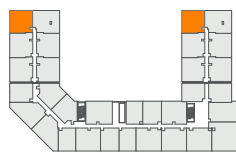
**\*67m<sup>2</sup>**

\*To confirm apartment location and sizing please refer to unit title plans with your sales consultant.



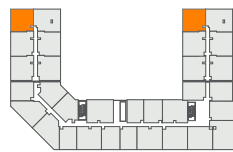
## Apartments

LEVEL 1



107, 126

LEVEL 2



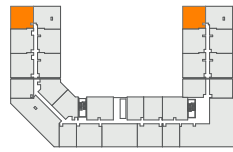
207, 226

LEVEL 3



307, 326

LEVEL 4



407, 422



# Two Bed Floor Plan 2 of 9

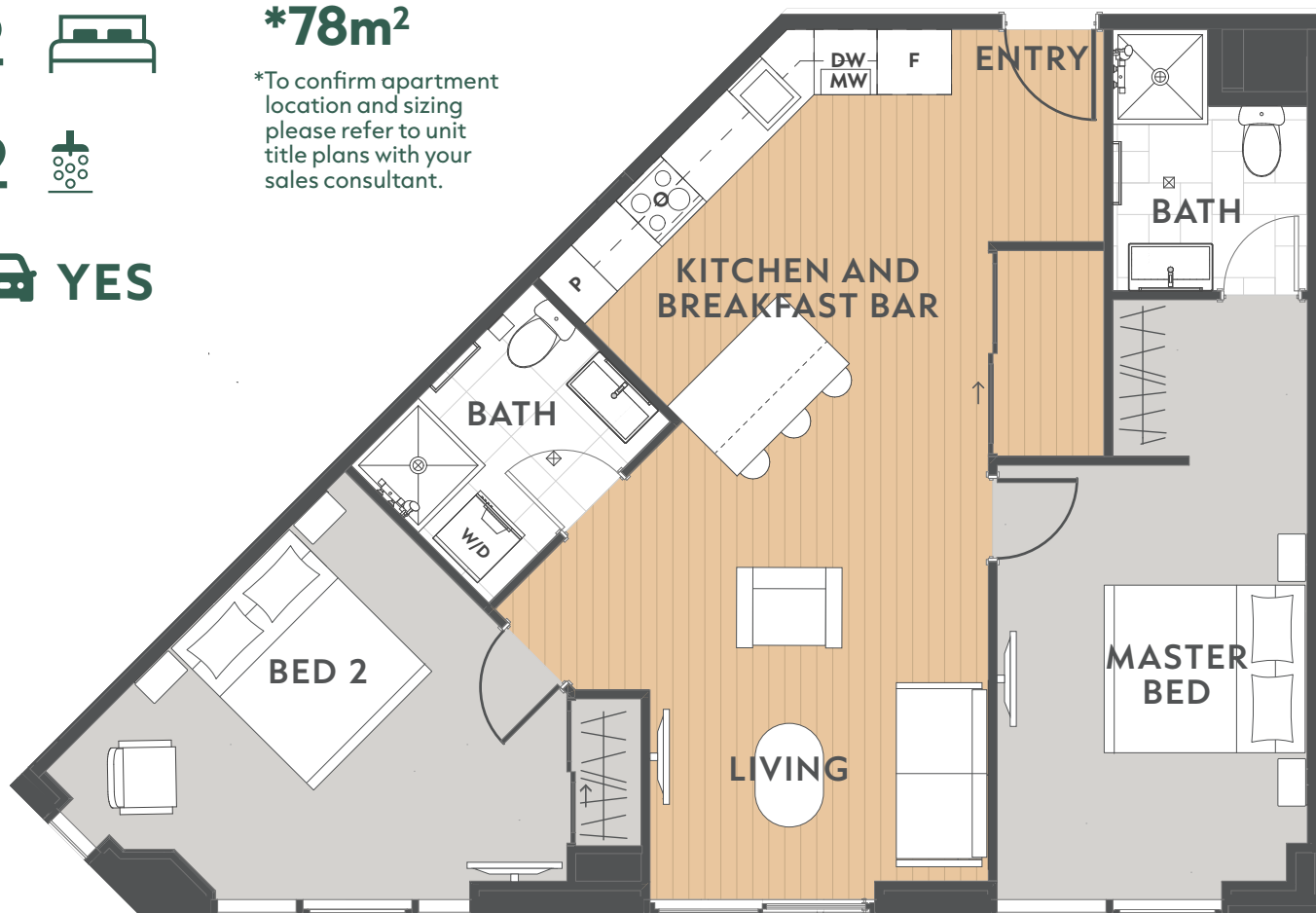
2 

**\*78m<sup>2</sup>**

\*To confirm apartment location and sizing please refer to unit title plans with your sales consultant.

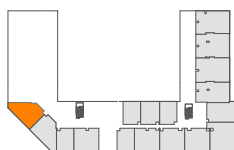
2 

 **YES**



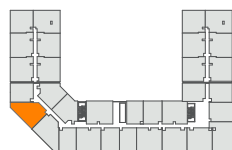
## Apartments

### GROUND



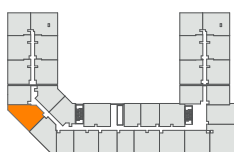
**G13**

### LEVEL 1



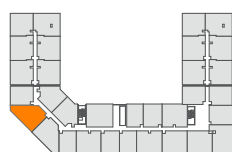
**122**

### LEVEL 2



**222**

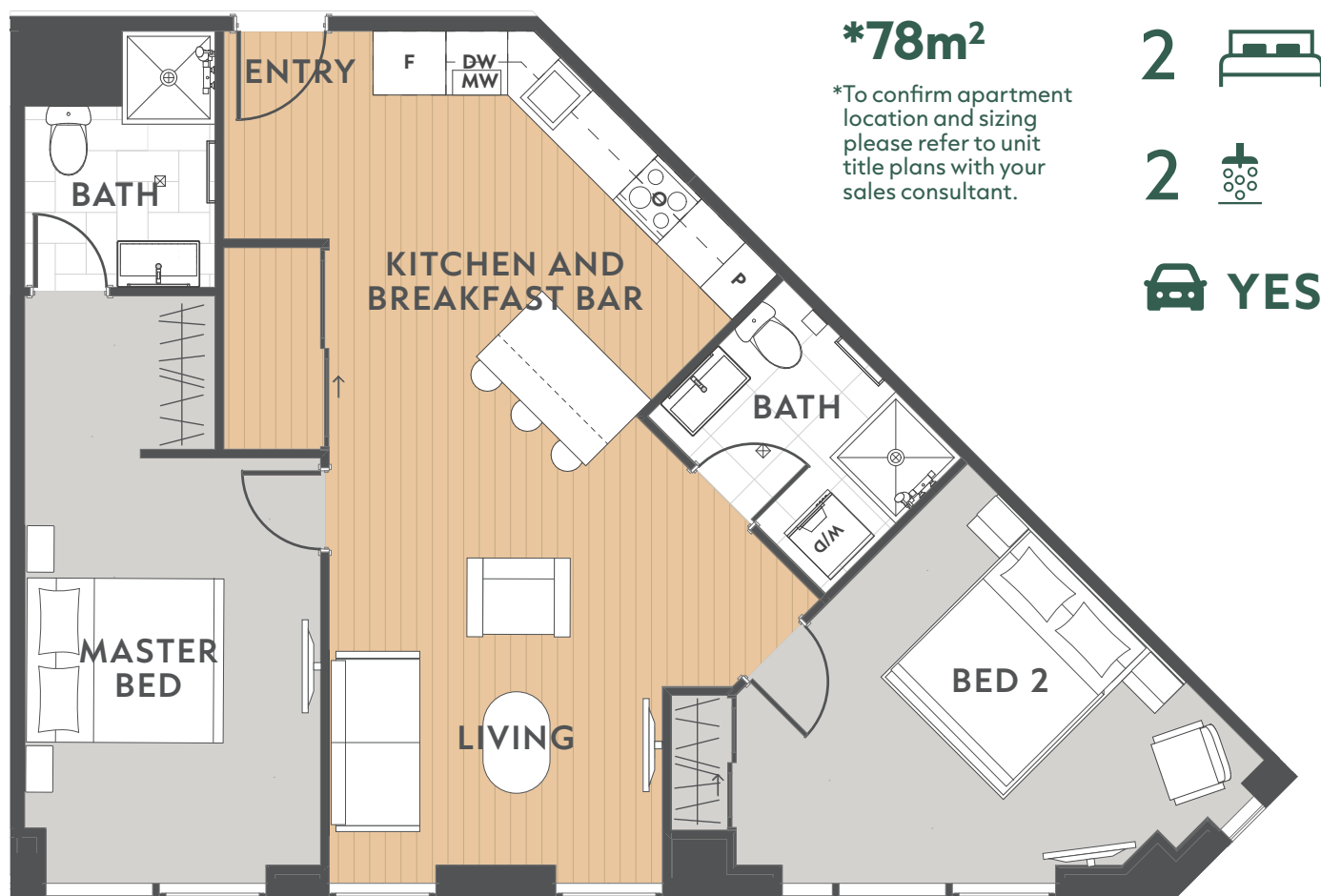
### LEVEL 3



**322**



# Two Bed Floor Plan 3 of 9



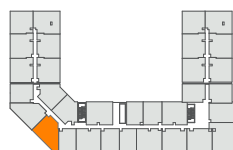
## Apartments

### GROUND



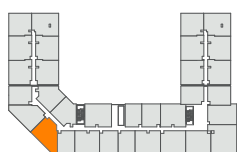
G12

### LEVEL 1



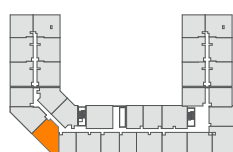
121

### LEVEL 2



221

### LEVEL 3



321





# Two Bed Floor Plan 4 of 9

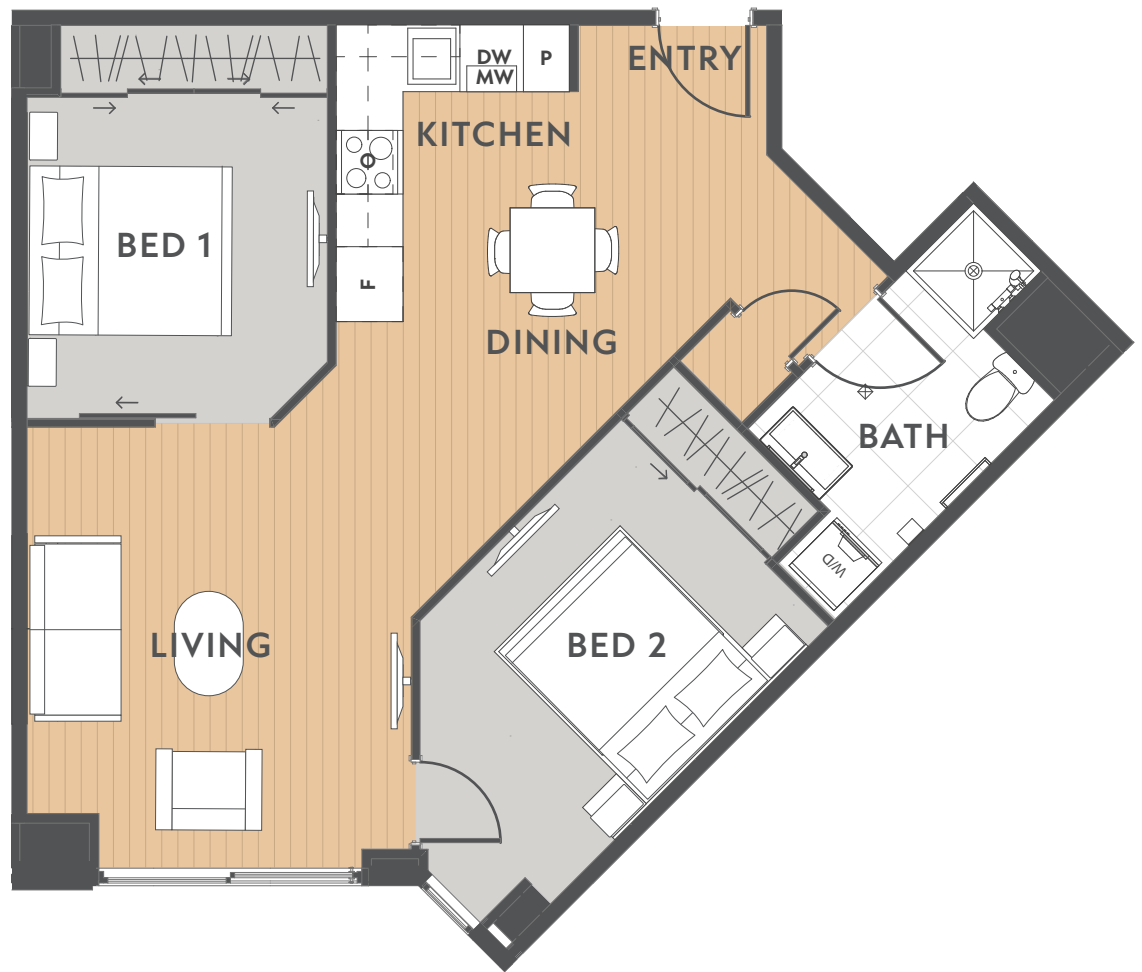
2 

1 

 YES

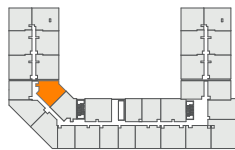
**\*64m<sup>2</sup>**

\*To confirm apartment location and sizing please refer to unit title plans with your sales consultant.



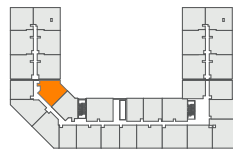
## Apartments

LEVEL 1



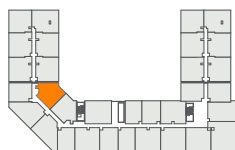
130

LEVEL 2



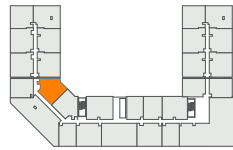
230

LEVEL 3



330

LEVEL 4



426



# Two Bed Floor Plan 5 of 9

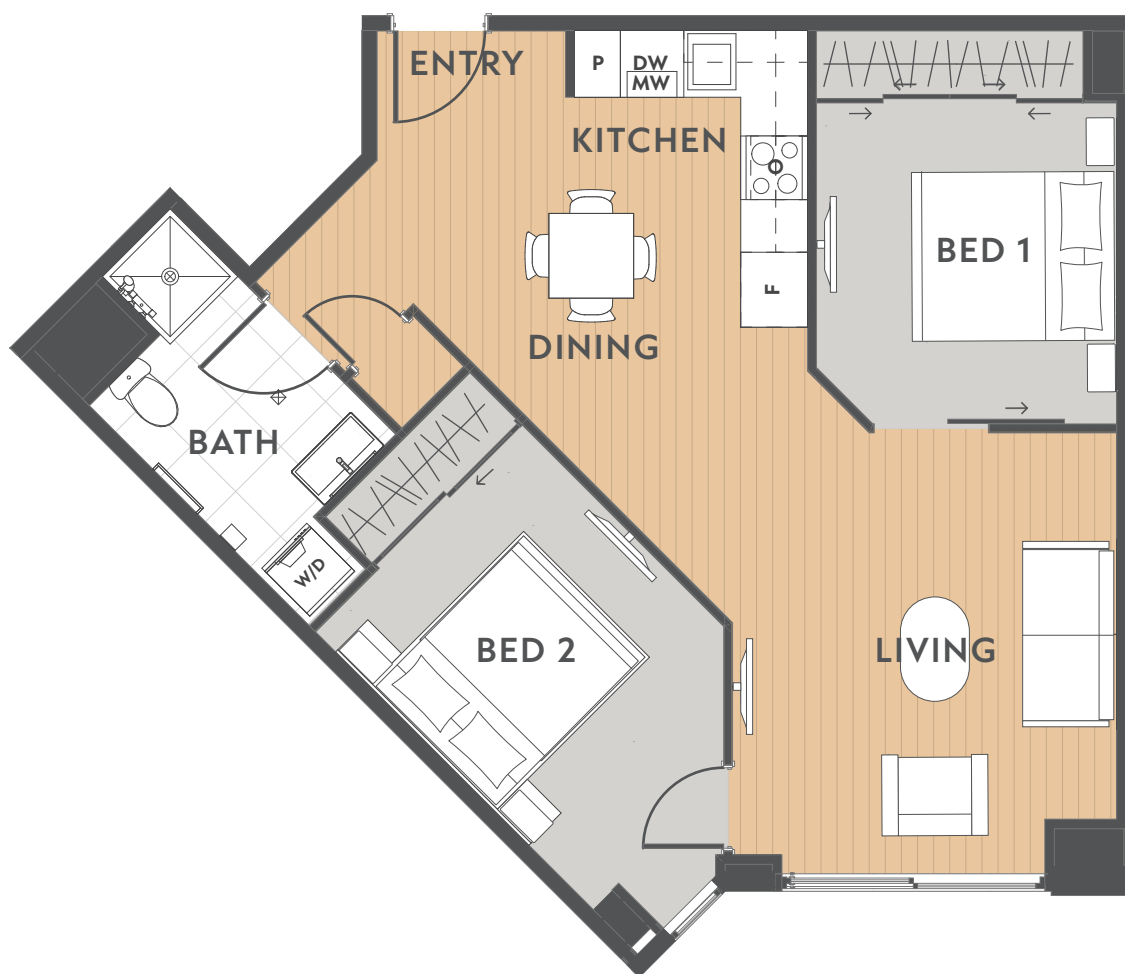
2 

1 

 YES

**\*64m<sup>2</sup>**

\*To confirm apartment location and sizing please refer to unit title plans with your sales consultant.



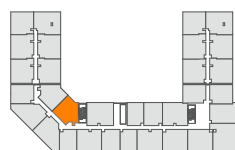
## Apartments

LEVEL 1



131

LEVEL 2



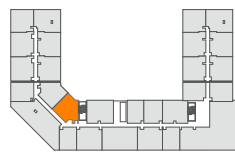
231

LEVEL 3



331

LEVEL 4



427



# Two Bed Floor Plan 6 of 9

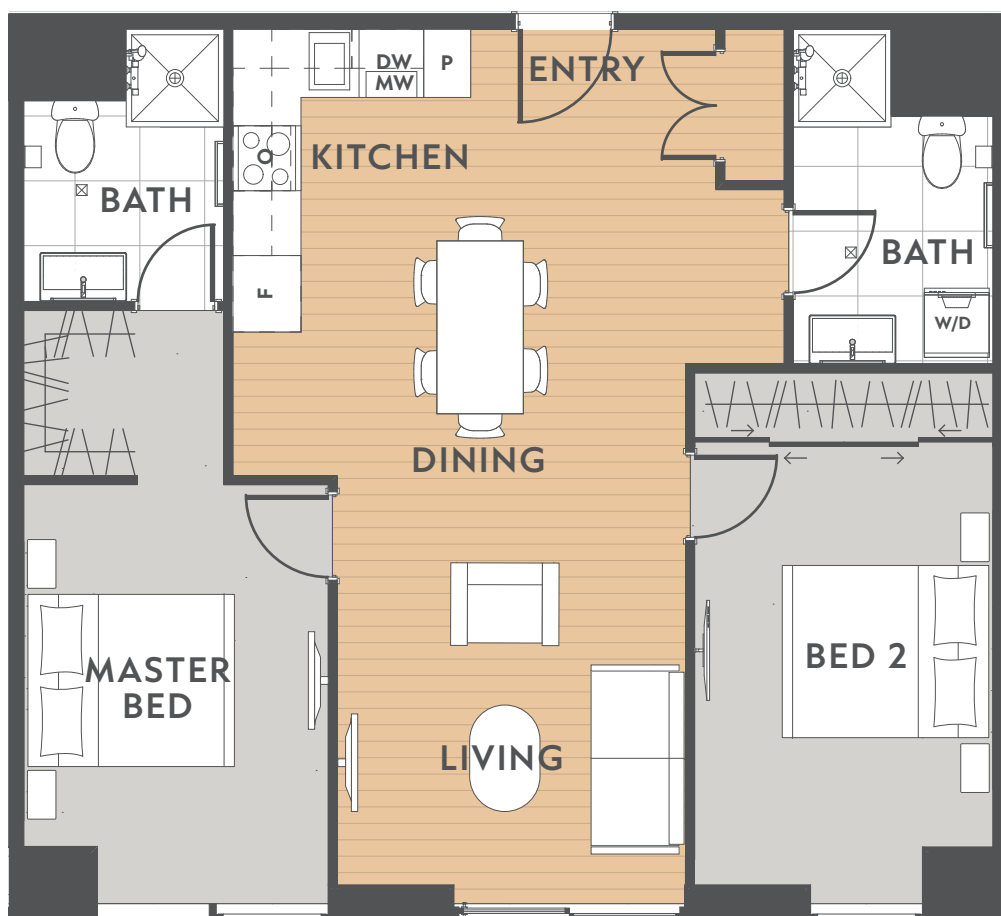
2 

2 

 YES

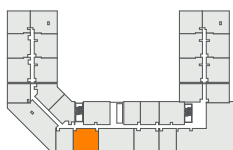
**\*75m<sup>2</sup>**

\*To confirm apartment location and sizing please refer to unit title plans with your sales consultant.



## Apartment

**LEVEL 4**



**416**



# Two Bed Floor Plan 7 of 9

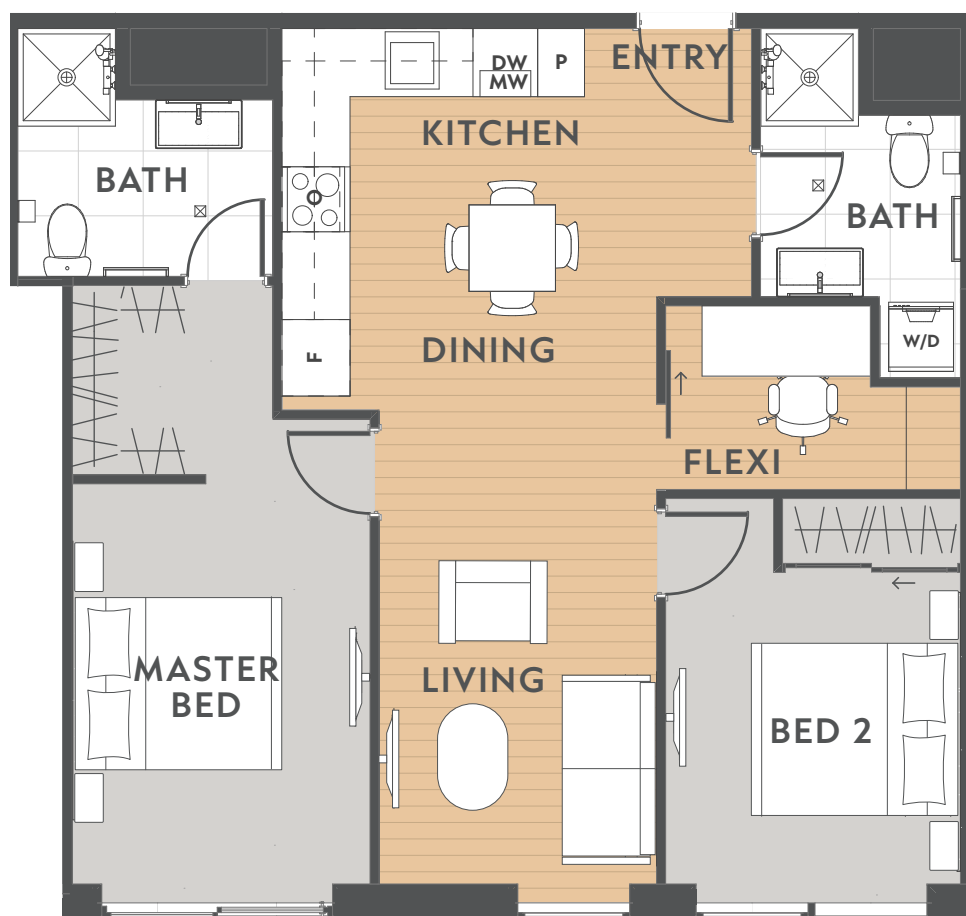
2  + FLEXI

2 

 YES

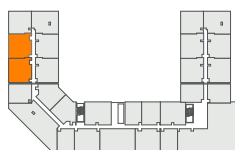
**\*71m<sup>2</sup>**

\*To confirm apartment location and sizing please refer to unit title plans with your sales consultant.



## Apartments

**LEVEL 4**



**420, 421**



# Two Bed Floor Plan 8 of 9

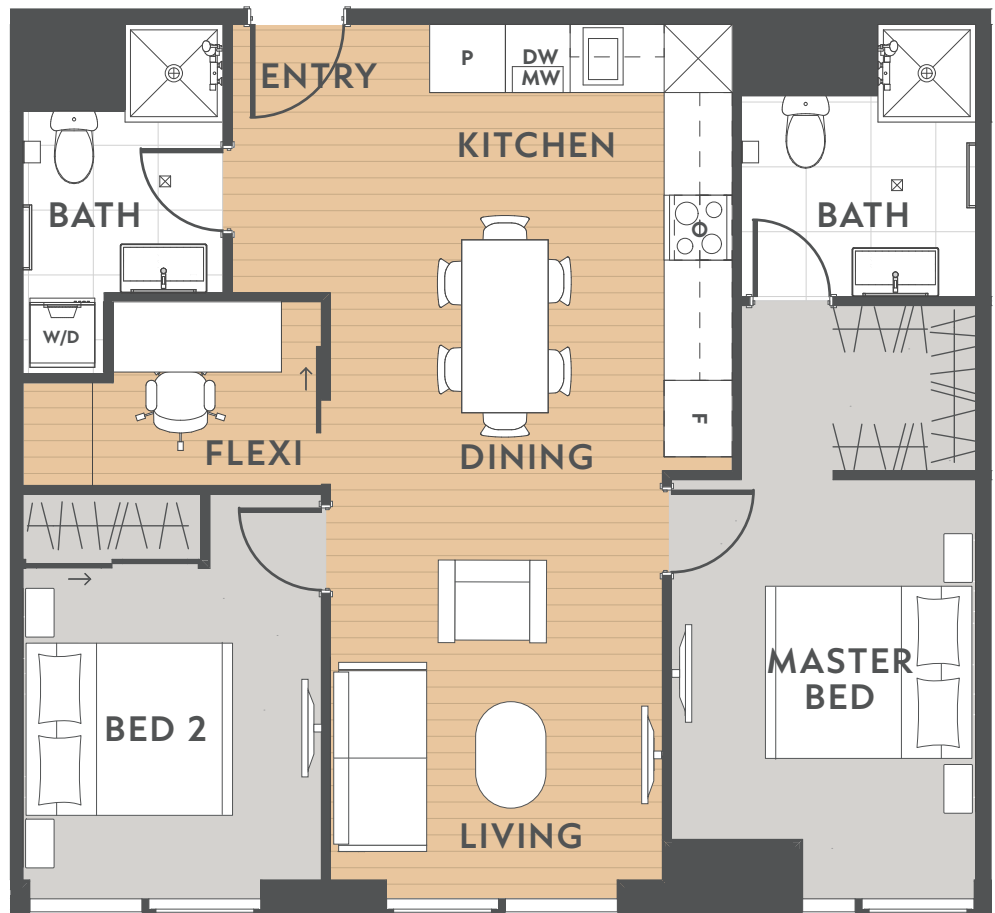
2  + FLEXI

2 

 YES

**\*74-75m<sup>2</sup>**

\*To confirm apartment location and sizing please refer to unit title plans with your sales consultant.



## Apartments

### GROUND



G06, G07

### LEVEL 1



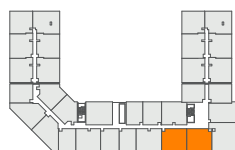
114, 115

### LEVEL 2



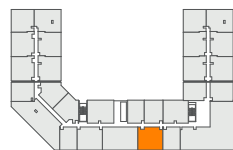
214, 215

### LEVEL 3



314, 315

### LEVEL 4



414



# Two Bed Floor Plan 9 of 9

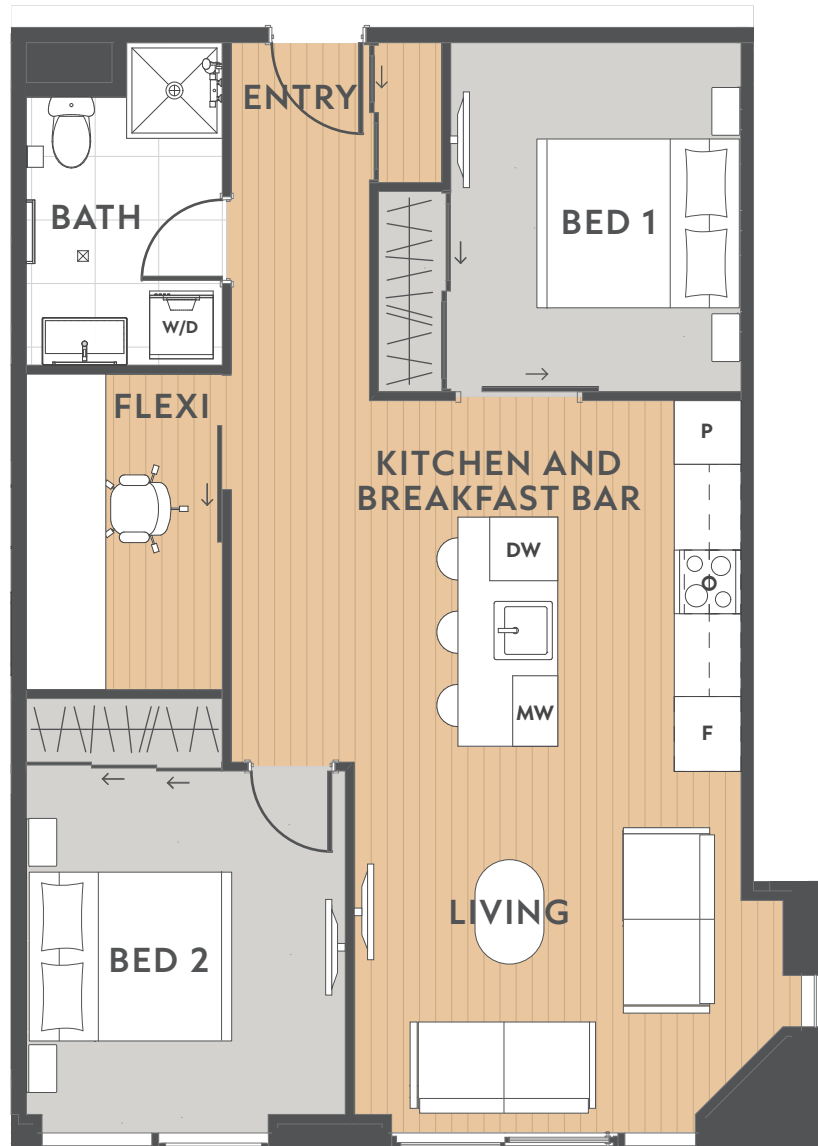
2  + FLEXI

1 

 YES

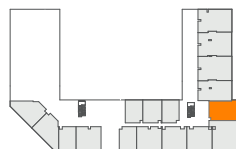
**\*74m<sup>2</sup>**

\*To confirm apartment location and sizing please refer to unit title plans with your sales consultant.



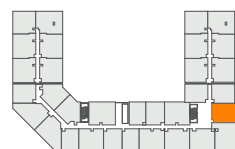
## Apartments

### GROUND



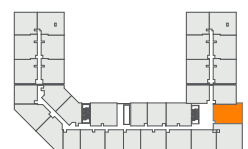
**G04**

### LEVEL 1



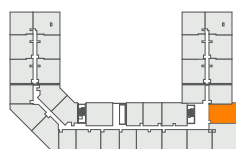
**112**

### LEVEL 2



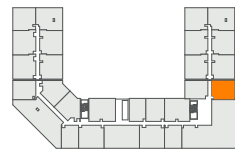
**212**

### LEVEL 3



**312**

### LEVEL 4



**411**





# Three Bed Floor Plan 1 of 1

3 

2 

 YES

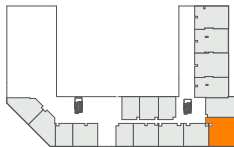
**\*102m<sup>2</sup>**

\*To confirm apartment location and sizing please refer to unit title plans with your sales consultant.



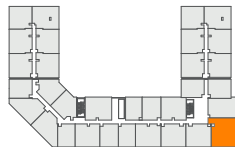
## Apartments

**GROUND**



**G05**

**LEVEL 1**



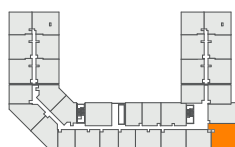
**113**

**LEVEL 2**



**213**

**LEVEL 3**



**313**



# 📍 Market Street

## REMARKABLES PARK, FRANKTON

Remarkables Park enjoys Queenstown's longest winter sunshine hours, best roading network, long water frontage and exceptional mountain views.



- 
- |  |   |
|--|---|
| 1. Remarkables Market <b>1 min drive</b>   | 4. 5 Mile Shopping Centre <b>6 min drive</b>    |
| 2. New World Queenstown <b>2 min drive</b> | 5. Jack's Point Golf Course <b>11 min drive</b> |
| 3. Queenstown Airport <b>2 min drive</b>   | 6. Queenstown Central <b>15 min drive</b>       |
- 

*Spacious modern layouts that maximise space and natural light*





# Features & Finishes

From acoustically treated flooring to electronic key locked front door, underfloor heating in bathrooms and three passenger lifts, the features provided in the apartments make for secure, comfortable and smart living.



## INTERIOR FINISHES ▾

Your choice of light or dark interior finishes

Light Option:



Dark Option:



ADVENTURE CAPITAL OF NEW ZEALAND

# Queenstown

Scenic activities in nature and vibrant Queenstown hotspots are at the doorstep of Mountain Oak Queenstown Apartments. Appreciate the beauty of Queenstown and live your dream alpine lifestyle.





# Invest in Queenstown

**EARN A GROSS YIELD OF UP TO 15%**

Complete with 365-day visitor accommodation consent, you could earn a short-term rental **gross return of up to 15%\*** placing Mountain Oak as a compelling investment opportunity.

\*Based on a 2 bed apartment rented short-term at an average nightly rate of \$475 at 70% occupancy.

Receive 60% of the annual income of your apartment, and have it managed 24/7 as short-term visitor accommodation by our experienced, on-site management service.



## **Strong potential for capital growth**

Queenstown median house prices are now the highest in NZ with an annualised capital growth of 7.4% for the last 5 years



## **Rental demand is high**

With continued population growth into the region, average weekly rents have seen a 4% annualised increase over the last 5 years



## **Approved for overseas purchasers**

Meaning non-NZ residents can buy



## **Choose from a selection of:**

One, two and three-bedroom apartments, dual-key apartments and private entry residences with carparking



## **Tax friendly investment**

With interest deductibility reinstated for investment properties



## **Strategically located in Frankton**

The gateway to the Queenstown-Lakes region

## ESTIMATED AVERAGE ↘ Nightly Room Rate

**This appraisal is based on the property's possession of a 365-day visitor accommodation consent.**

The estimated average nightly room rate considers specifications such as the property location; unit typology's amenities and size; and demand for rooms based on the time of year.

SHORT TERM	ONE BED	TWO BED	THREE BED	TWO BED PRIVATE ENTRY	DUAL KEY ONE BED	DUAL KEY STUDIO
Nightly Average	\$280	\$475	\$625	\$475	\$280	\$203
High Season (Jan, Feb, Mar, Aug, Nov, Dec)	\$302	\$513	\$675	\$513	\$302	\$219
Low Season (May, June)	\$202	\$342	\$450	\$342	\$202	\$146



# MOUNTAIN OAK

## QUEENSTOWN APARTMENTS

**FREE\***  
APPLIANCE  
PACKAGE

**FREE** Fridge/Freezer  
& Washer/Dryer

*\*Available for a limited time only*

**CONTACT US**

[mountainoak.co.nz](http://mountainoak.co.nz)



**LISA HUANG**

Sales Specialist

[lisah@safarigroup.co.nz](mailto:lisah@safarigroup.co.nz)

+64 22 194 8160



**VANCE HAYWOOD**

Sales Specialist

[vanceh@safarigroup.co.nz](mailto:vanceh@safarigroup.co.nz)

+64 21 995 056

**INVEST IN PROPERTY WITH CONFIDENCE**



DEVELOPED BY

**SG SAFARI GROUP**

